



Your partner in saving sight.®

Smart360[®] Mini-Guide

FOR 16-19mm SCLERAL LENSES



eaglet-eye

BostonSight[®]
464 Hillside Avenue, Suite 205
Needham, MA 02494

888-SCLERAL (888-725-3725)
BostonSightSCLERAL.org

The Key to Success: A Good Scan

Good Measurement is the key to successful lens design and fitting using Eaglet's Eye Surface Profiler (ESP). The ESP lets you scan the entire front surface of the eye, in a single shot, covering over 20mm in diameter and more. This is the perfect starting point for a great fit with BostonSight SCLERAL's Smart360® free-form design. However, obtaining high-quality scans is essential!

Key factors to help you capture quality scans with the ESP:

- **Lubrication:** Pathological or dry eyes can be challenging to measure; ensure they are well-hydrated.
- **Focus:** Similar to photography, precise device focusing is crucial.
- **Fluorescein:** Every part of the eye covered with fluorescein will be measured; ensure there is enough fluorescein — more is better.
- **Open the eyelids:** Scan size is dependent on how much of the eye is exposed, so a wider opening is essential, especially when fitting larger lenses.
- **Speed:** Be fast! Some pathological eyes tend to dry out quickly, thus speed is key.

Tips:

- For dry eye patients, ask them to use extra lubricating drops for 3 to 4 days before the appointment. This will improve the tear film quality.
- Various methods can help in keeping the eyelids open: use fingers (two for the upper lid may also help), lid sticks, Q-tips, or finger cots to aid in holding the lids. Find out which method works best for you or the individual taking the scan.

For questions about using your ESP or troubleshooting your ESP, please contact support@eaglet-eye.com. BostonSight SCLERAL is not able to answer questions directly about the ESP.

Diameter Recommendations

You know your patients best, however it can be helpful to have a quick reference for which diameter may work well for your case. The following are general guidelines.

16, 16.5 and 17mm

Small HVIDs
($\leq 11.0\text{mm}$)

Small apertures

Tight lids

Regular corneas

Pediatric patients

Difficulty
handling lenses

18, 18.5 and 19mm

Large HVIDs
($\geq 11.5\text{mm}$)

Compromised
ocular surface

Highly ectatic
corneas

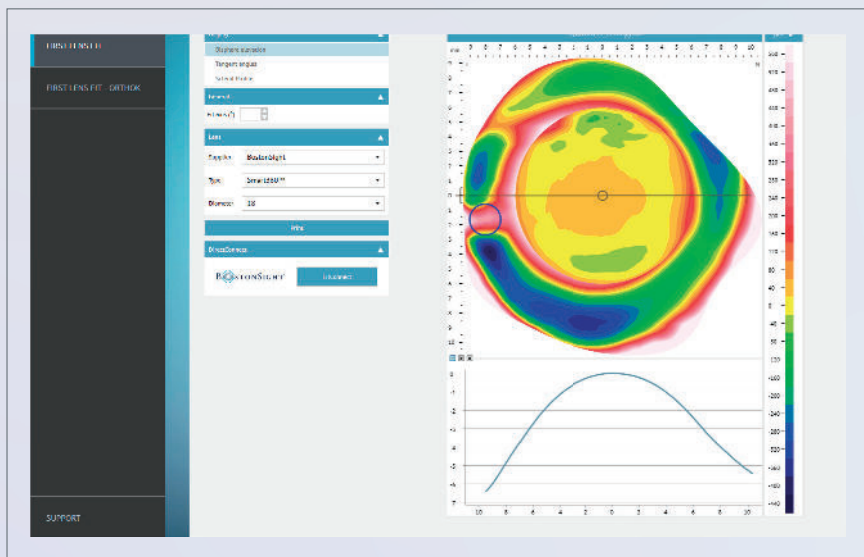
Chronic exposure

Compromised /
fragile grafts

Severe dry eye

Scan Patient

- ① If your patient is new to FitConnect® [register your patient](#) in FitConnect before proceeding. Register your patient at fitconnect.bostonsight.org. **BE SURE TO LOG OUT ONCE COMPLETE.**
- ② In the Eaglet ESP software:
 1. Open the patient scan and select **First Lens Fit** on left menu. Note: If you require support on obtaining a good scan with your ESP, please see the Eye Surface Profile Measure Guide [here](#).
 2. On the main screen, under **Lens** choose:
 - Supplier: BostonSight
 - Type: Smart360
 - Diameter: select appropriate diameter (see reference guide on prior page, if needed)
 - TIP: Note which eye you are uploading — you will need this later in FitConnect)
 3. Click **FitConnect** and export will begin.



Start Order in FitConnect

- 1 In FitConnect®, select your patient and [Start a New Order](#).

Select:

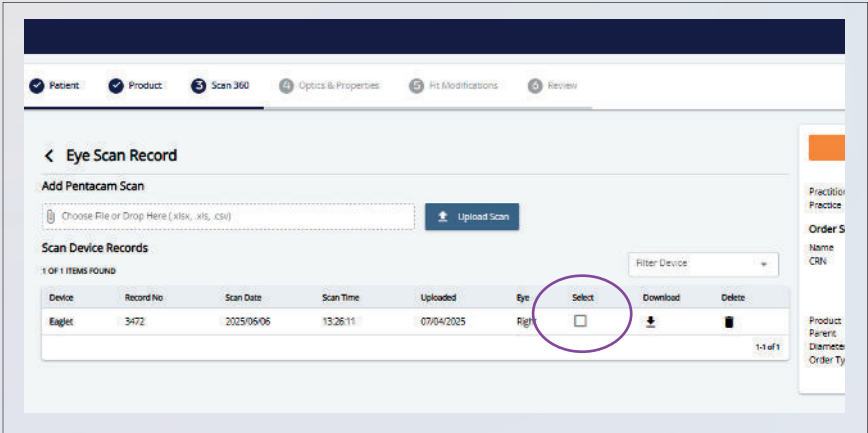
1. Fit Method as [Smart360](#)

2. Select [Right](#) or [Left Eye](#)
3. Product as [SCLERAL Smart360](#)
4. Click [Order Type](#) then [Continue](#)

Access Scan Data in FitConnect

Your scan data will appear in FitConnect on the Eye Scan Record screen under [Scan Device Records](#). Check the corresponding Select box and then click Continue (orange button) on the top right to proceed.

If the scan does not appear under Scan Device Records call consultation for assistance at 888-SCLERAL. option 2.



Adjust Lens Optics & Properties

① Calculate Lens Optics to enter over-refraction by 1 of 3 options:

- BostonSight SCLERAL trial lens with FSE
- RGP Trial
- Manual lens optics entry

Select **Calculate** at each of the options to update the corresponding Lens Optics.

The screenshot shows the 'Optics & Properties' window in SolidWorks. The 'Optics Reference Lens' tab is active, displaying a table with columns 'Parameter' and 'Value/Unit'. The table contains three rows: 'Surface Power' with a value of '0.00', 'Cylinder' with a value of '0.00', and 'Tilt' with a value of '0.00'. A red circle highlights the 'Calculate' button at the bottom right of the table. Below the table, the 'Properties' section is visible, showing a table with columns 'Parameter' and 'Value/Unit'. The table contains three rows: 'Time/Type #12' with a value of 'F21', 'Material' with a value of 'Custom Optimum Error', and 'Hydro PEG' with a value of 'No'. A red circle highlights the 'Calculate' button at the bottom right of the table. The 'Properties' section also includes a 'Calculate' button at the bottom right.

② Under **Properties**, select:

1. SmartSight FSE
2. Material
3. Hydra-PEG, if applicable
4. Dot Color (black or clear)

Click **Continue**.

Fit Modifications

③ Enter data to design your lens:

- Corneal Clearance – your desired central sag vault. We recommend 250 - 300 microns.
- Base Curve – the algorithm will make a recommendation, however you can adjust.
- Horizontal Iris Diameter (HVID) – obtain data from topographer or measure using slit lamp.
- Vertical Iris Diameter (VVID) – obtain data from topographer or measure using slit lamp.
- Click [Recalculate](#).

The screenshot displays the 'Fit Modifications' interface of the Smart360 software. The top navigation bar includes tabs for 'Patient', 'Product', 'Scan 360', 'Optics & Properties', 'Fit Modifications' (which is active), and 'Review'. The 'Fit Modifications' section contains several input fields: 'Diameter' (17.0), 'Base Curve' (33), 'Corneal Clearance (um)' (250), 'Horizontal Iris Diameter' (12.5), and 'Vertical Iris Diameter' (12). A 'Recalculate' button is highlighted with an orange circle. Below these fields are five graphs showing Meridian 12.00, Meridian 9.00, Meridian 3.00, Meridian 6.00, and Meridian 12.00, each with 'Front Profile' and 'Back Profile' curves. On the right, there is an 'Order Summary' section with fields for Patient Name, Date, and various lens parameters like Power, Base Curve, and Diameter. A 'Continue' button is at the top right of the 'Fit Modifications' section.

④ Click [+SmartChannel](#) if you would like to add Channels for reducing suction or vaulting.

⑤ Click [Continue](#) to go to the [Order Summary](#) page and place your order.

THIS PAGE INTENTIONALLY LEFT BLANK

THIS PAGE INTENTIONALLY LEFT BLANK

THIS PAGE INTENTIONALLY LEFT BLANK



Your partner in saving sight.*

BostonSight®
464 Hillside Avenue, Suite 205
Needham, MA 02494

Copyright © 2025

888-SCLERAL (888-725-3725)
BostonSightSCLERAL.org

MKT-007 Rev 1