

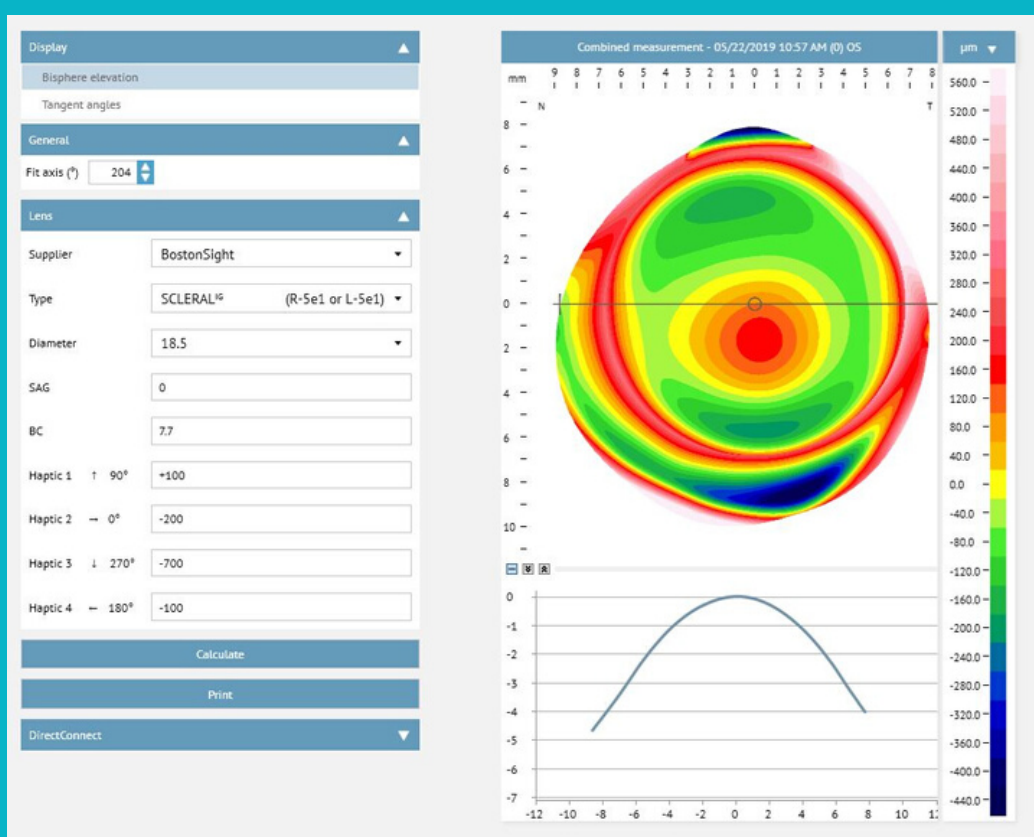
USING SCLERAL^{IG} TO OPTIMIZE COMFORT, VISUAL CLARITY, AND EFFICIENCY

CASE STUDY WITH DR. BARRY LEONARD

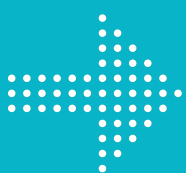
44 y/o male paralegal. Requires good vision in fast-paced legal office. BVA w/ spectacles 20/70.

SCLERAL LENS FITTING

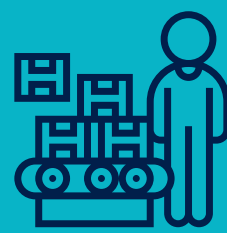
Patient previously wore 17.0 sclerals with poor comfort, mid-day fogging, and vision issues. We refit left eye with SCLERAL^{IG} 18.5 mm using ESP profilometry and FitConnect[®].



Eaglet's DirectConnect software integration with FitConnect allows the image to go straight to the BostonSight manufacturing lab.



FitConnect[®]



BostonSight manufacturing lab

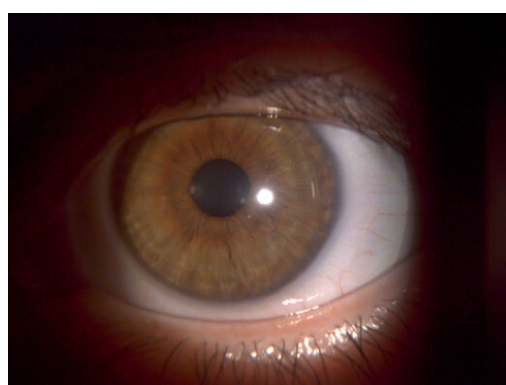
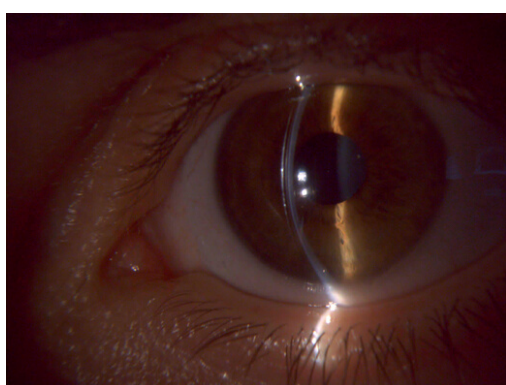
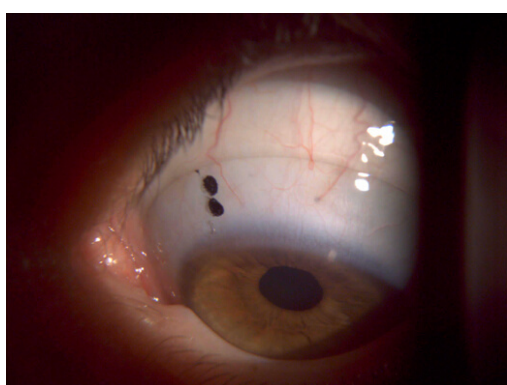
RESULTS

Success with first lens!

“

Best lens ever.

Patient was very happy and stated this is the “best lens ever.” He wanted to refit the right eye to this larger, better lens design.



ABOUT DR. LEONARD

Dr. Barry Leonard is a therapeutic optometrist trained in the treatment and management of eye diseases, specialty contact lenses, corneal refractive therapy, and pre- and post-operative patient care. His specialties include fitting custom soft contact lenses and scleral lenses for patients with corneal conditions including keratoconus, dry eye, and surgical complications. He has a practice at Dr. Barry Leonard and Associates in Panorama City, CA.

