

Sponsor Spotlight:



[Learn More](#)

[Sign Up](#)

[Facebook](#)

BostonSight SCLERAL: The GO-TO Data-Driven Lens

Impactful Results of Measurable Patient Outcomes

BostonSight is committed to working with practitioners and their patients to foster feedback about their experience using BostonSight SCLERAL.

This patient engagement also enables BostonSight to evaluate the effectiveness of our interventions, and measure patient outcomes.

MyFitReport™ is our value-added, *Patient Gathered Health Data* component of the BostonSight SCLERAL *Beyond the Fit™* program consisting of two surveys based on patient experience prior to and with BostonSight SCLERAL. Included are questions pertaining to use of prior prescription lenses, overall satisfaction, intent to continue using BostonSight SCLERAL, and the Ocular Surface

Disease Index[®] (OSDI[®]). The OSDI is assessed on a scale of 0 to 100, with the higher scores representing greater disability. The OSDI is a valid and reliable instrument for measuring dry eye disease (normal, mild to moderate, and severe) and its effect on vision-related function¹.

Upon completion of both surveys, the patient receives a free SCLERAL Lens Emergency Kit and the practitioner receives an individualized results report detailing their patient's experience before and after wearing BostonSight SCLERAL -- these responses are shared only with the patient's practitioner, which the patient consents to when enrolling in the program.

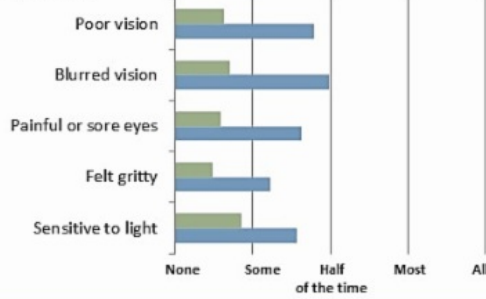
The de-identified aggregate data is shared across the entire provider community and used to improve satisfaction for both patients and practitioners. We are pleased to share this **Aggregate Summary Report** from patients who have completed the MyFitReport[™] Program since our product launch in March 2017.

Measurable Patient Outcomes: Aggregate Summary Report

■ With BostonSight SCLERAL ■ Prior to BostonSight SCLERAL

Eye Assessment – Ocular Surface Disease Index® (OSDI®)

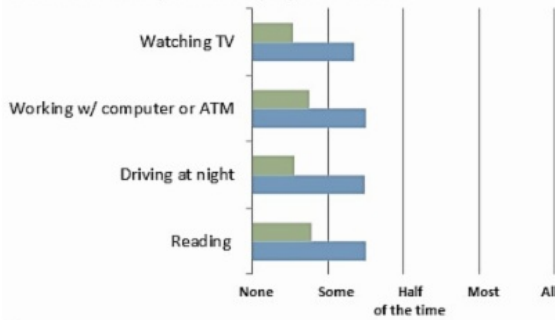
Eye Experience



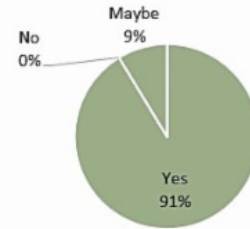
Prior Prescription Lenses Tried

None	41%
1-2	33%
3-4	20%
4+	4%
Not Reported	2%

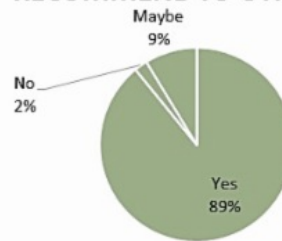
Problems with eyes limited performance in...



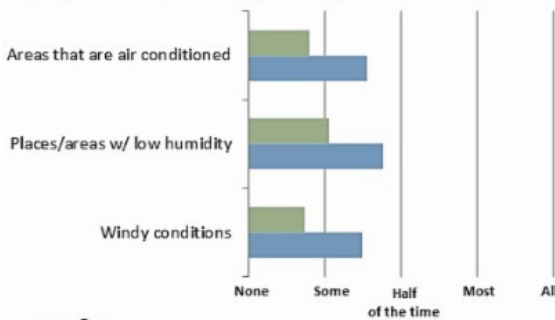
INTENT TO CONTINUE



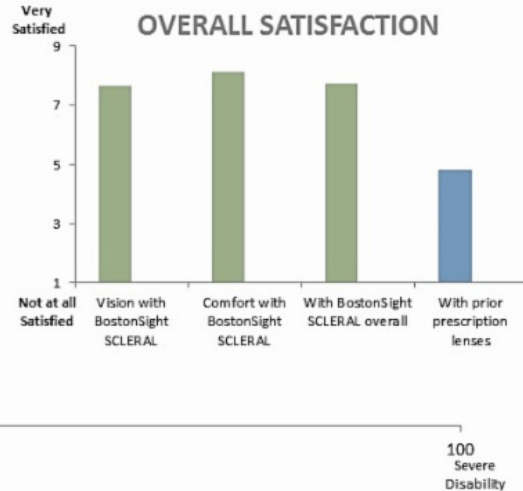
RECOMMEND TO OTHERS



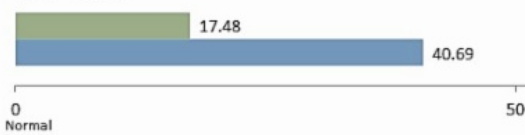
Eyes felt uncomfortable in following situations...



OVERALL SATISFACTION



OSDI® Score



Beyond The Fit™ Program



FitConnect™



MyFitReport™



FitAssist™

BostonSight SCLERAL's Beyond the Fit™ program includes:

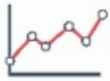


FitConnect™: An intuitive, web-based fitting and order management system for BostonSight SCLERAL which empowers the practitioner to:

- Make modifications in real-time for more accurate endpoints
- Adjust designs using graphical representations of individual hemi-meridian profiles
- Modify sagittal height and 4 independent hemi-meridians



FitAssist™: BostonSight is reducing financial barriers to BostonSight SCLERAL by offering a scleral lens voucher program



MyFitReport™: Provides patient-generated health data (PGHD), with patient-specific feedback, to allow practitioners to evaluate product performance and patient satisfaction

Designed by data.

The first and only data-driven fitting system based on

7,000 EYES

Designed to fit.

The only lens with a built-in

SCLERAL SHAPE



Designed for life.

No startup costs Required
No extensive training needed
No special equipment necessary



- Learn More about BostonSight SCLERAL
- Sign Up for BostonSight SCLERAL
- Join our FitGroup on Facebook



The BostonSight Lab is an FDA compliant and ISO certified manufacturing lab.

