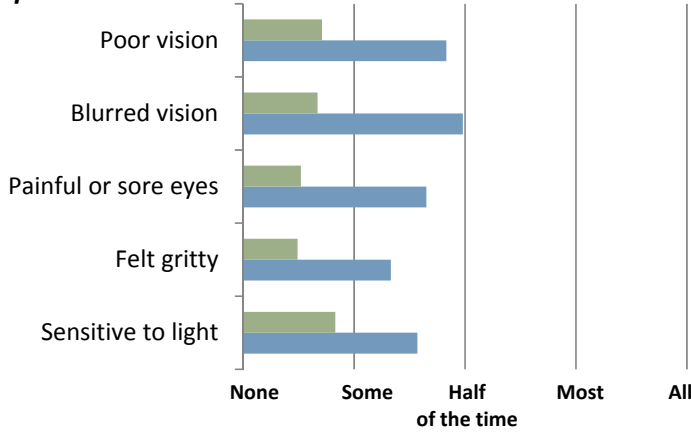


■ With BostonSight SCLERAL

■ Prior to BostonSight SCLERAL

### Eye Assessment – Ocular Surface Disease Index® (OSDI®)

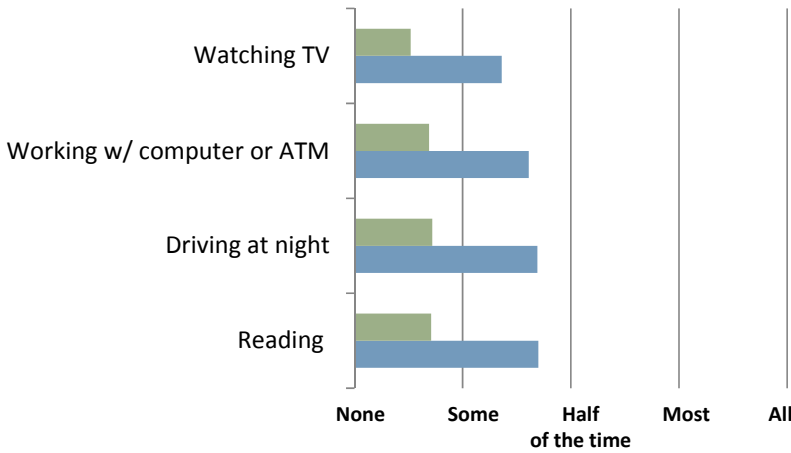
#### Eye Experience



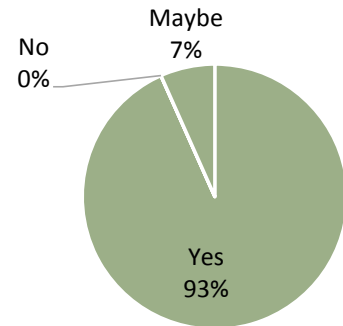
### Prior Prescription Lenses Tried

None	47%
1-2	32%
3-4	13%
4+	5%
Not Reported	3%

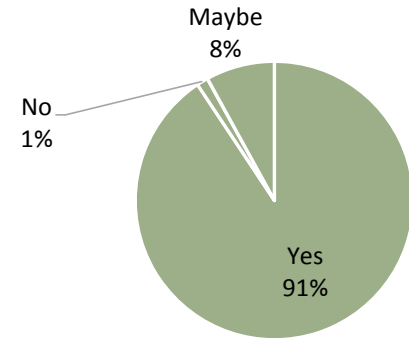
#### Problems with eyes limited performance in...



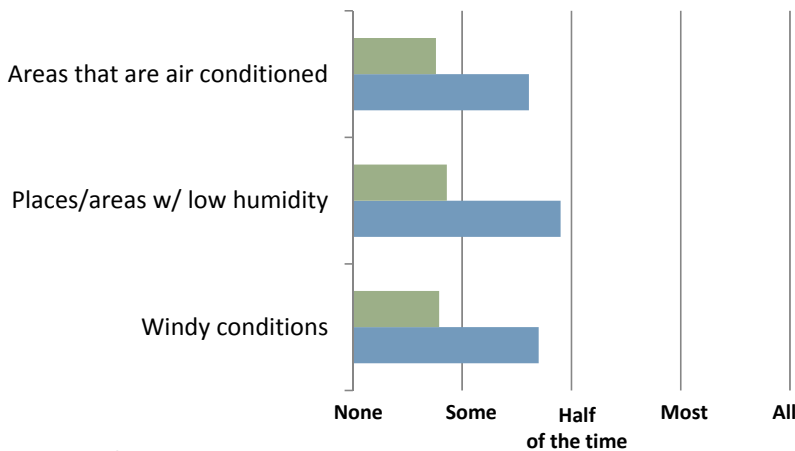
### INTENT TO CONTINUE



### RECOMMEND TO OTHERS

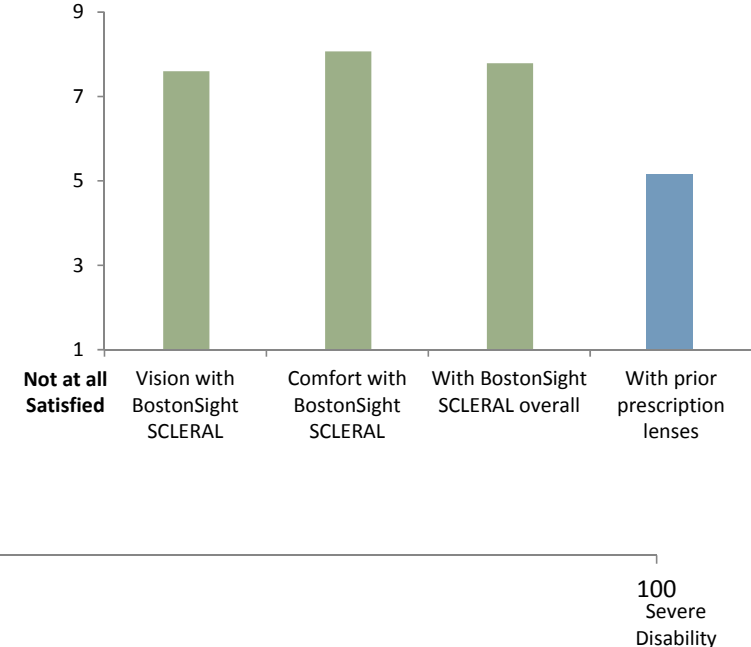


#### Eyes felt uncomfortable in following situations...

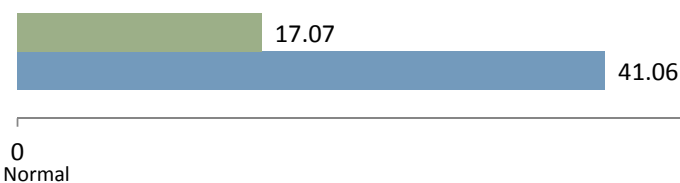


Very Satisfied  
9  
7  
5  
3  
1  
Not at all Satisfied

### OVERALL SATISFACTION



#### OSDI® Score



0 Normal

50

100 Severe Disability